



WISE Partnership

Water, Infrastructure & Supply Efficiency

Pinery Water and Wastewater District

What is WISE?

- Aurora and Denver Water partner
- Combining their water and infrastructure
- To improve water resource utilization for Aurora and Denver, and
- To deliver water to WISE Authority when it's available

**Denver &
Aurora Water
Supplies**

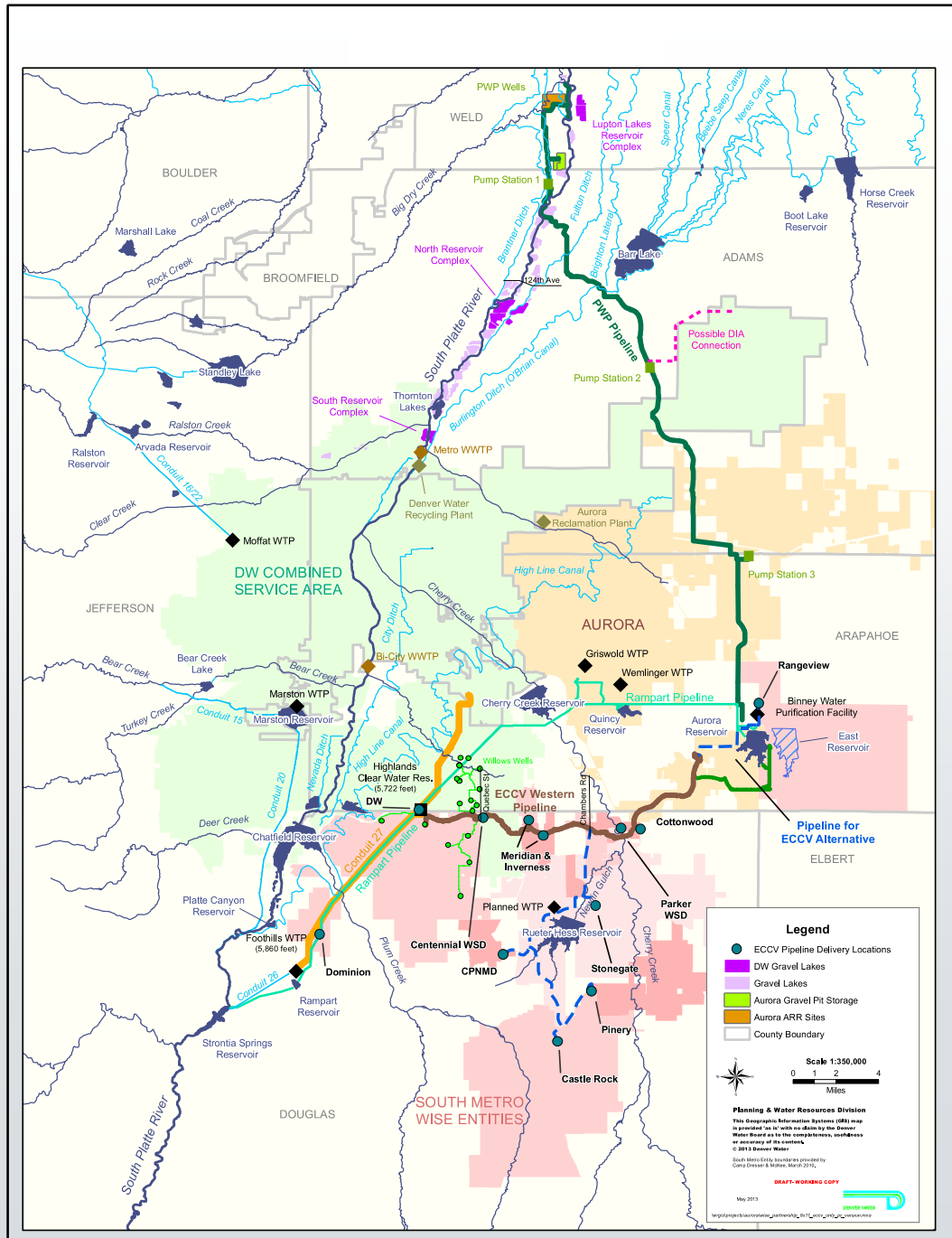


**Aurora's PWP
Infrastructure**



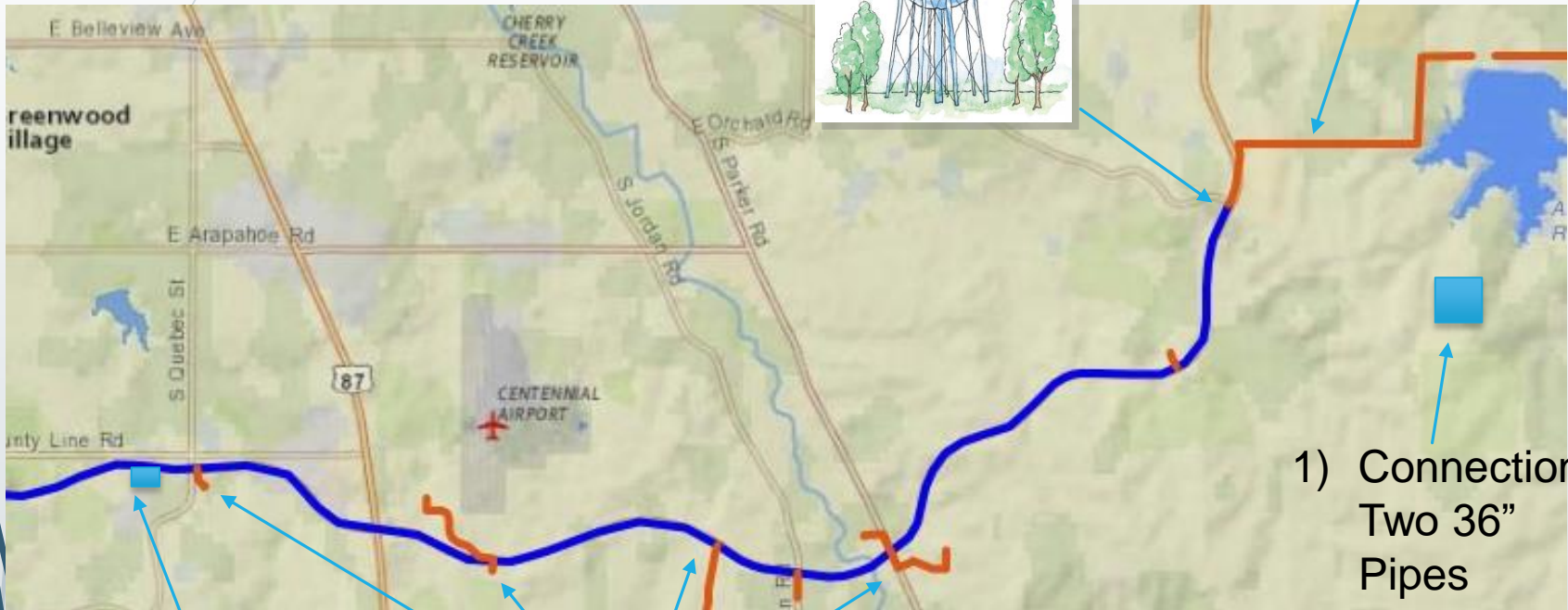
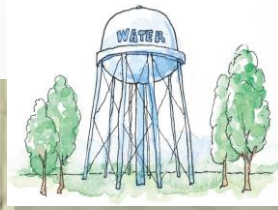
**Delivery to
Aurora, Denver,
& SMWA**

WISE Infrastructure



South Metro WISE Infrastructure

2) Water Tank (2MG)



Future Pipe
Built by 2021

1) Connection
Two 36"
Pipes

3) 4MG Greensand
Water Treatment
Facility

4) 5-6 Connection Points
5) Associated SCADA System

Current Status

- ▶ Complete:
 - ▶ All Core infrastructure is installed
 - ▶ 7 of 10 SM WISE Authority Members receiving renewable water from Aurora
- ▶ In Process:
 - ▶ Final local connections to Pinery, Meridian and Centennial WSD under construction
 - ▶ Final design for ultimate connection to Aurora's Binney WPF
 - ▶ Planning for blending supplies in year 2030





Pinery Infrastructure

- ▶ 1.5 million gallons per day of capacity in the Ridgeway Pipeline project.
- ▶ Connection to Parker Water and Sanitation District
 - ▶ Pinery has secured 1.0 million gallons per day of capacity in Parker WSD existing pipelines and pump stations
- ▶ 16" Pipeline from Stroh Road to Chapman Pump Station
 - ▶ Currently under construction